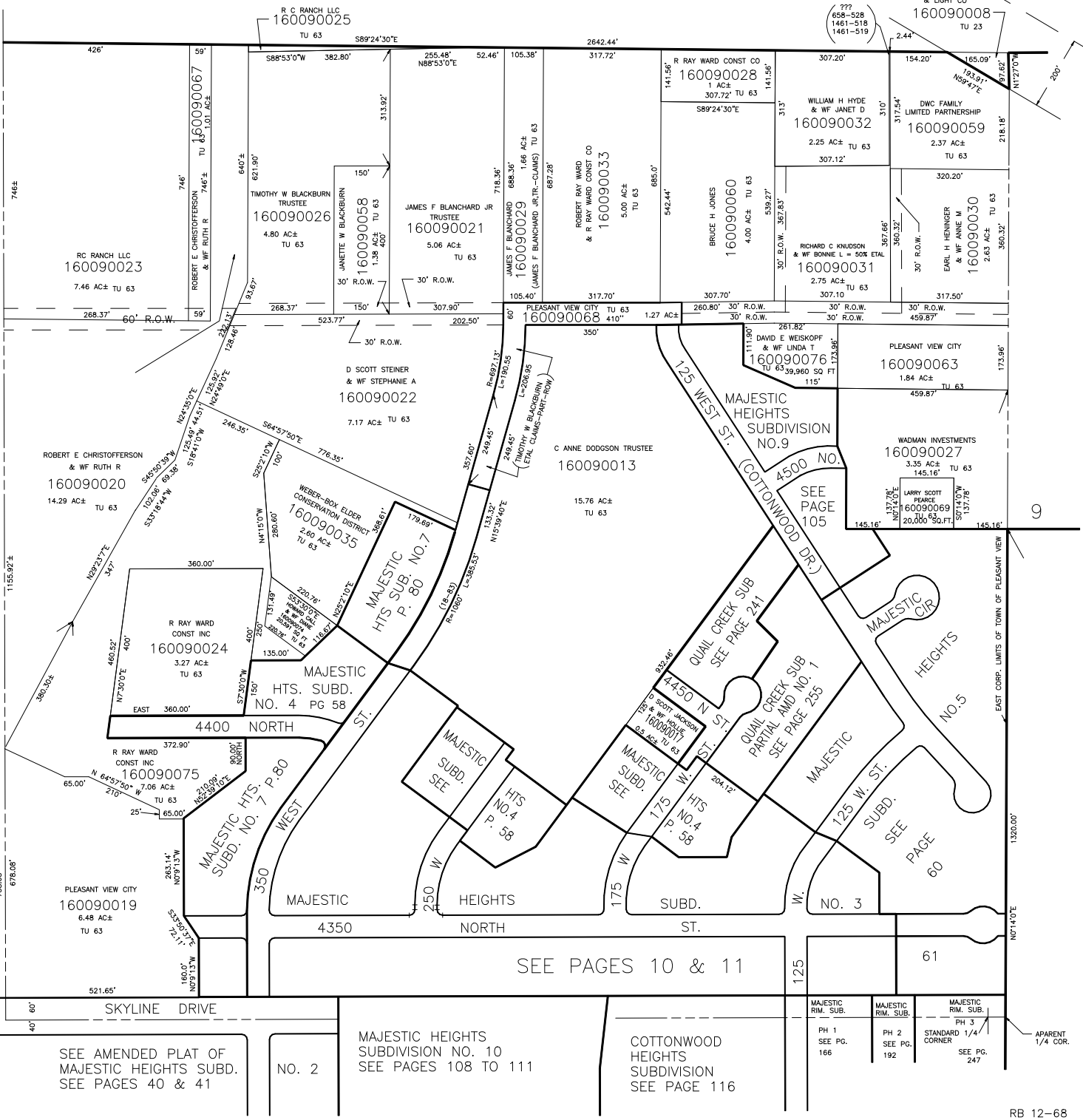


S.W. 1/4
SECTION 17, T.7N., R.1W., S.L.B. & M.

IN WEBER COUNTY AND PLEASANT VIEW CITY

TAXING UNIT: 23,63

SCALE 1" = 200'



SEE P 12

SEE AMENDED PLAT OF MAJESTIC HEIGHTS SUBD. SEE PAGES 40 & 41

NO. 2

MAJESTIC HEIGHTS SUBDIVISION NO. 10 SEE PAGES 108 TO 111

COTTONWOOD HEIGHTS SUBDIVISION SEE PAGE 116

MAJESTIC RIM. SUB. PH 1 SEE PG. 166	MAJESTIC RIM. SUB. PH 2 SEE PG. 192	MAJESTIC RIM. SUB. PH 3 STANDARD 1/4 CORNER SEE PG. 247	APARENT 1/4 COR.
-------------------------------------	-------------------------------------	---	------------------